



A E R O S O L ● C A N

The proven Classic

The Aerosol Can has proven to be very reliable and easy to use. It works with compressed gas or other environmentally-friendly propellants. Individual shapes ensure an ergonomic and comfortable feel. With the addition of various valve combinations, it can deliver product in a targeted area – whether narrow or broad. Special lithography and paints provide unlimited design possibilities.

Raw material

High quality aluminium.

Internal lacquer

Based on epoxyphenol, PAM or PVC (special coating on request); compatibility tests recommended.

Bar pressure

Maximum bar pressure of 18 bar.

Base coat

Complete external covering (white or coloured) or translucent (colourless or coloured); Pearl effect available.

Printing

1 to 6 colours, printed full or % half tone.

Over lacquer

Gloss, semi-matt or matt, special finishes available.

Features

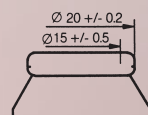
Functional, robust, light, elegant, unbreakable, non-fading, safe, easy to handle, 100% recyclable.

Markets

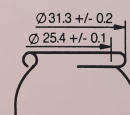
Personal care, pharmaceutical, technical, food/nonfood.

Diameter	Dimensions FEA	Filling quantities FEA			Shoulder shape and opening		
		Liquid gas	Compressed gas	Declared volume brimful	C2*	spherical**	flat***
22 mm	22 x 52 mm	12 ml	–	17 ml	●		
	22 x 68 mm	15 ml	–	23 ml	●		
25 mm	25 x 65 mm	20 ml	–	28 ml	●		
	25 x 95 mm	30 ml	–	41 ml	●		
35 mm	35 x 65 mm	40 ml	30 ml	55 ml		●	
	35 x 88 mm	50 ml	–	75 ml		●	
	35 x 97 mm	50 ml	–	75 ml	●		
	35 x 105 mm	–	50 ml	89 ml		●	
	35 x 111 mm	–	50 ml	89 ml	●		
	35 x 125 mm	75 ml	–	110 ml		●	
	35 x 156 mm	100 ml	75 ml	140 ml		●	
	35 x 156 mm	100 ml	75 ml	140 ml		●	
38 mm	38 x 90 mm	–	50 ml	89 ml		●	
	38 x 110 mm	75 ml	–	110 ml		●	
	38 x 138 mm	100 ml	75 ml	140 ml		●	
40 mm	40 x 100 mm	75 ml	–	110 ml		●	
	40 x 110 mm	75 ml	–	110 ml	●		
	40 x 125 mm	100 ml	75 ml	140 ml		●	
	40 x 133 mm	100 ml	75 ml	140 ml	●		
	40 x 156 mm	125 ml	100 ml	175 ml		●	
45 mm	45 x 100 mm	100 ml	75 ml	140 ml			●
	45 x 105 mm	100 ml	75 ml	140 ml		●	
	45 x 125 mm	125 ml	100 ml	175 ml		●	
	45 x 135 mm	125 ml	100 ml	175 ml	●		
	45 x 146 mm	150 ml	125 ml	210 ml			●
	45 x 150 mm	150 ml	125 ml	210 ml		●	
	45 x 158 mm	150 ml	125 ml	209 ml	●		
	45 x 190 mm	200 ml	150 ml	270 ml		●	
50 mm	50 x 121 mm	150 ml	125 ml	210 ml			●
	50 x 125 mm	150 ml	125 ml	210 ml		●	
	50 x 156 mm	200 ml	150 ml	270 ml		●	
	50 x 165 mm	200 ml	150 ml	265 ml			●
	50 x 190 mm	250 ml	200 ml	335 ml		●	
53 mm	53 x 110 mm	150 ml	125 ml	210 ml			●
	53 x 139 mm	200 ml	150 ml	270 ml			●
	53 x 142 mm	200 ml	150 ml	270 ml		●	
	53 x 170 mm	250 ml	200 ml	335 ml			●
	53 x 175 mm	250 ml	200 ml	314 ml			
	53 x 175 mm	250 ml	200 ml	335 ml		●	
	53 x 202 mm	300 ml	250 ml	405 ml			●
	53 x 205 mm	300 ml	250 ml	405 ml		●	
59 mm	59 x 142 mm	250 ml	200 ml	335 ml		●	
	59 x 168 mm	300 ml	250 ml	410 ml			●
	59 x 169 mm	300 ml	250 ml	405 ml		●	
	59 x 211 mm	400 ml	300 ml	520 ml			●
66 mm	66 x 214 mm	400 ml	300 ml	520 ml		●	
	66 x 143 mm	300 ml	250 ml	405 ml		●	
	66 x 178 mm	400 ml	300 ml	520 ml		●	
66 mm	66 x 178 mm	400 ml	300 ml	520 ml		●	
	66 x 218 mm	500 ml	400 ml	650 ml		●	

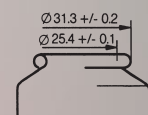
Other specifications on demand.



* C2
(15 mm)



** spherical
(1" = 25,4 mm)



*** flat
(1" = 25,4 mm)

Print specification

Print technology Letter-Press indirect
(wet-in-wet)

Max. number of colors 1 to 6
 Max. ink density 150%
 Resolution line work 900 bis 1270 dpi
 Resolution screen work 300 dpi
 Screen ruling 54 lpc / 137 lpi
 Minimal Tonal value 2%
 Maximal Tonal value 100%
 Increase in dot gain (light %) 5 bis 10%
 Increase in dot gain (medium%) 8 bis 15%
 Increase in dot gain (dark %) 8 bis 20%
 Trapping 0,03 mm

Fontsize

Positiv 4 pt
 Negativ 5 pt
 Light and serifs font to be agreed

Rule width

Positiv 0,2 mm
 Negativ 0,3 mm

Tolerance in colour registration +/- 0.02 mm
 Deviation in colour +/- 7%
 Partly varnishing not possible
 Colour pattern yes

Supply of files

We prefer PDF-datas saved in print quality.

Format of Files

Acceptable are ArtPro 10.1; Nexus 9.5.8:Adobe CS DP 5.5, PDF's or PS-Datas. Linotype Gold Edition 1.7 or fonts provided. Not acceptable QXP!

All colours need to be defined in Pantone-References. Remove under-colours. When printing vignettes, hard lines will be visible. Iris-graduations can be printed. Please supply images in CMYK – necessary modifications will be made by our repro-team.

Print Areas

Kindly ask the Sales Administration for the correct print area. Layouts have to be to scale 1:1.

Barcodes GTIN (EAN-8/13 and UPC A(B))

Barcodes to be printed in black out of white base coat, with agreement SC 0-9 master as per ANSI 1635. Any other colour combination in accordance with Sales Administration only.